



## **ABS IPWizard II Easy Installation Guide**

**Nov 2008**

## ABS MegaCam Series Network Cameras – IP Wizard II Easy Installation Guide

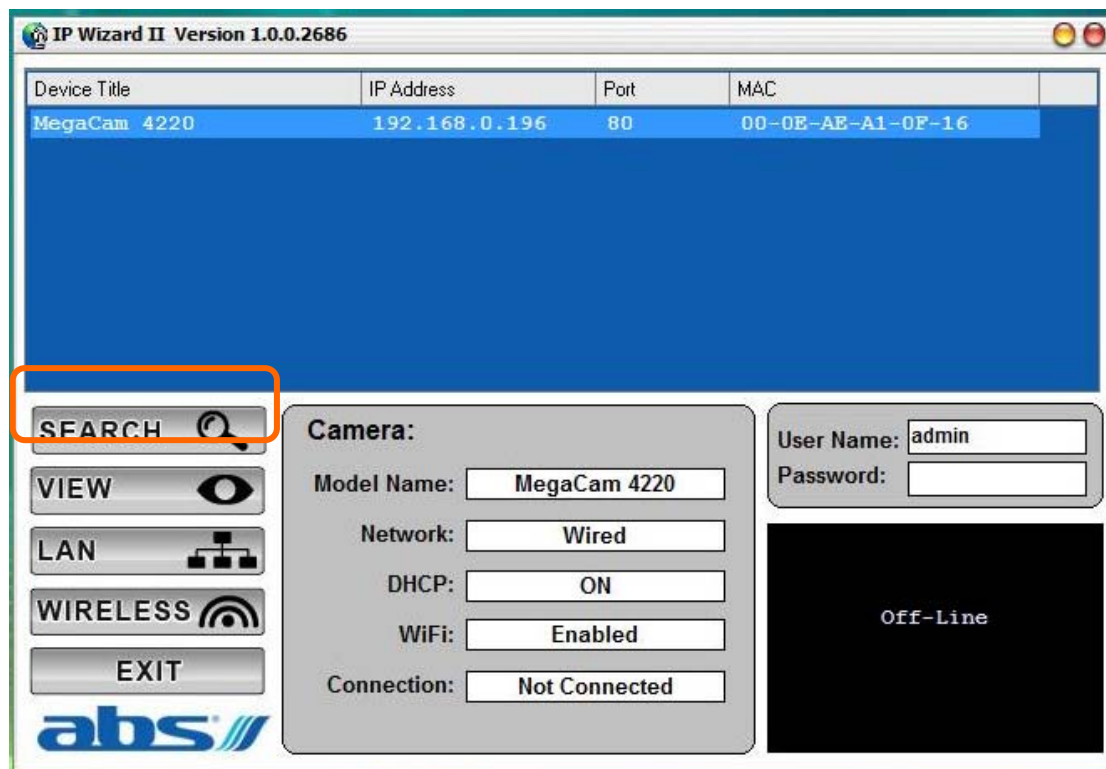
## Installation

Download the IP Wizard II from <http://www.abs.com/support/networkdriver.asp>, unzip the file, and install it on your computer. (Windows 2000, XP, and Vista)

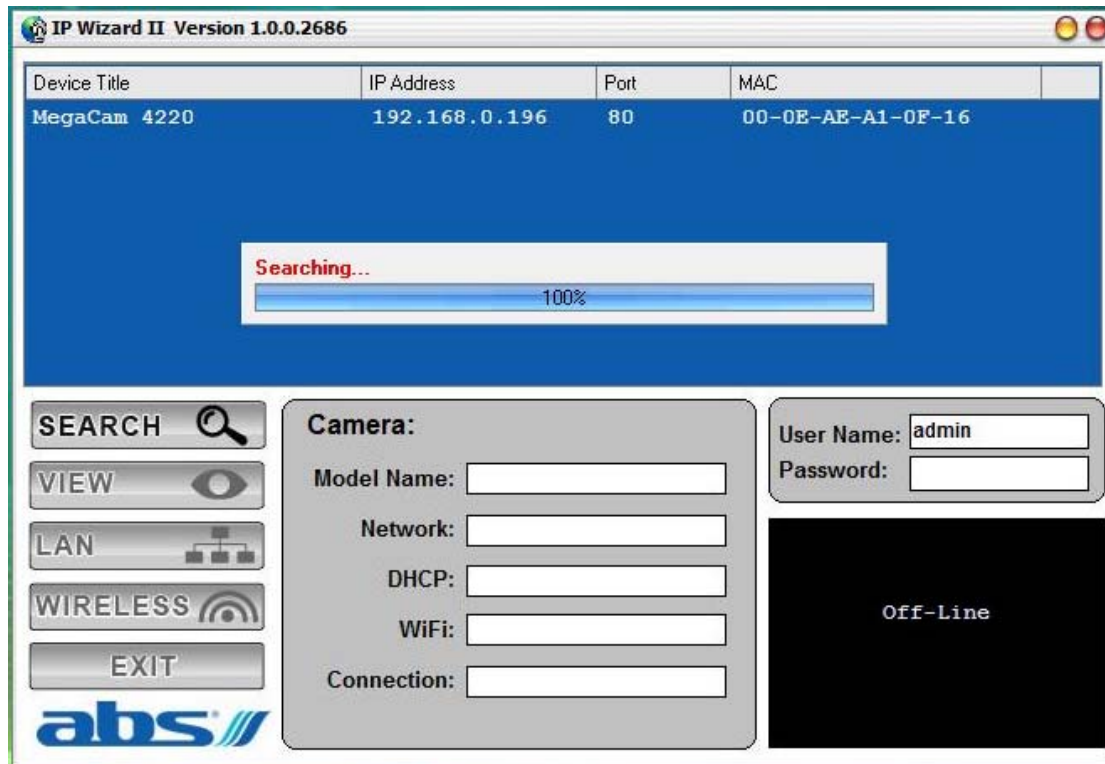
## Run IP Wizard II

Click on your Windows “Start” → “All Programs” → “IP Wizard II” → “IP Wizard II” to run the application.

## Search

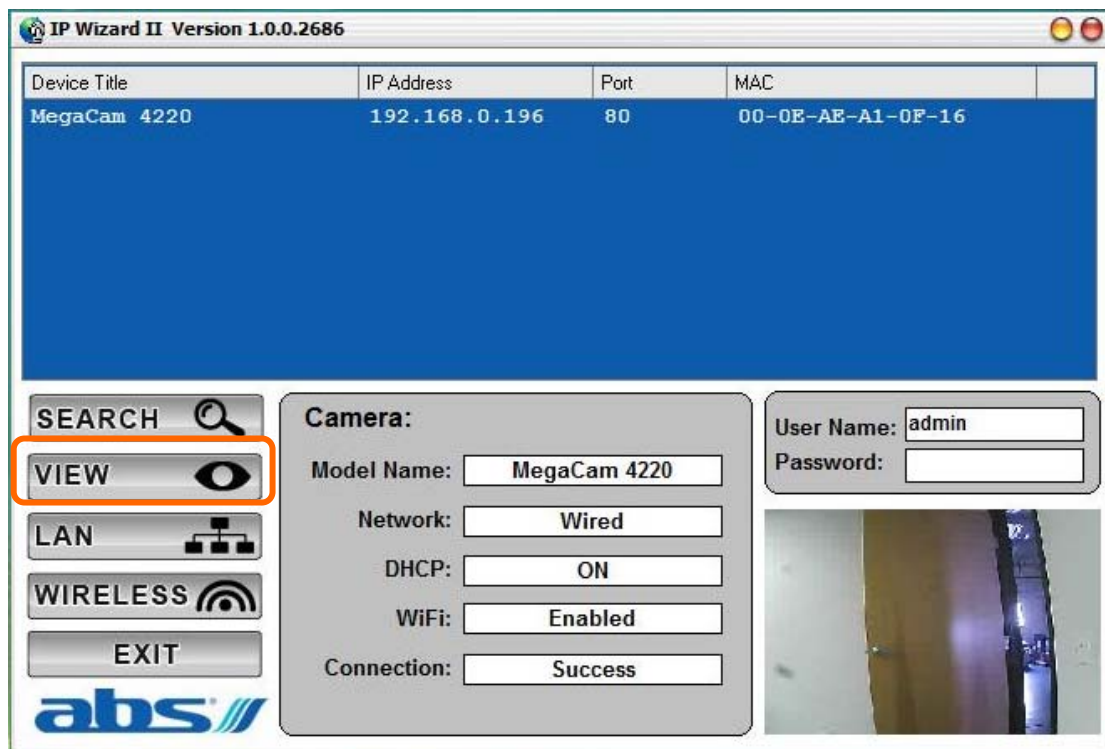


When click **Search** button, a searching window will pop up. IPWizard II is starting to search Network Cameras on the LAN. The existed devices will be listed as below.



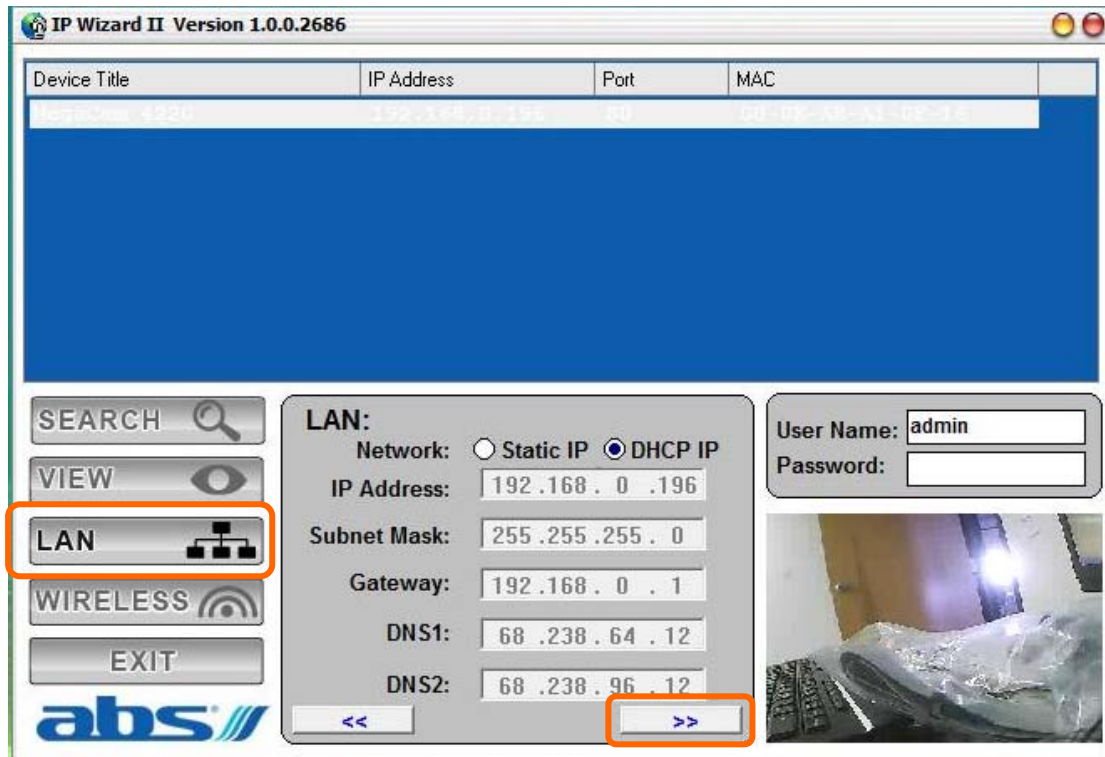
## View

If IPWizard II finds network devices, **View** button will be available. Please select the device you want to view and click the **View** button. Furthermore you could double click to view the network device in browser.

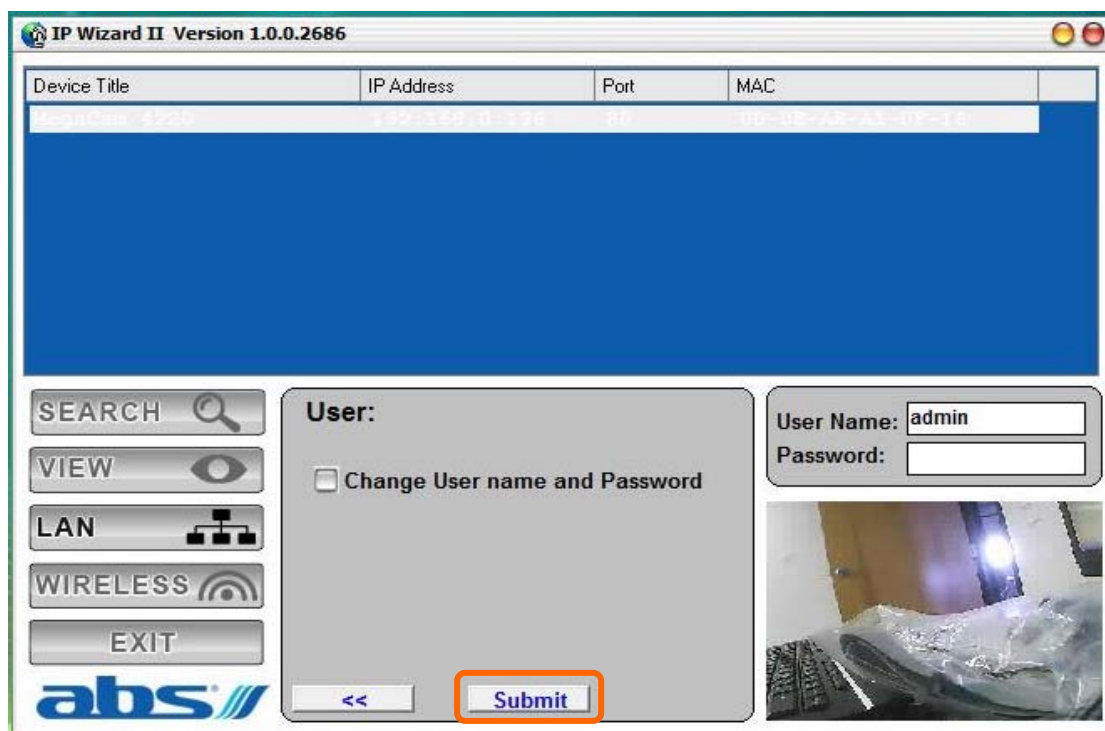


## LAN

In case you want to change the IP related parameters of wired connection, please select the device you want to configure and click the **LAN** button to continue as below.



You can modify the relative settings of the selected device. Click “<<” button will quit the LAN setting procedure and click “>>” button will move to next page as below.



In case, you do not want to change username and/or password, then just click “**Submit**” button to perform your setting accordingly. Click “<<” button will go back to previous page.

If you like to change username and/or password of the device, click the check button. Then, the related fields will show up as below.

IP Wizard II Version 1.0.0.2686

Device Title	IP Address	Port	MAC
192.168.1.100	192.168.1.100	80	00-00-00-00-00-00

SEARCH

VIEW

LAN

WIRELESS

EXIT

abs

User:

☒ Change User name and Password

New User Name:

New Password:

Confirm Password:

<< Submit

User Name:

Password:

Off-Line

After keying in new username and password, click “**Submit**” button to perform your setting accordingly. Click “<<” button will go back to previous page.

## Wireless

In case you want to change the IP related parameters of wireless interface, please select the device you want to configure and click the **Wireless** button. Relative settings will be carried out as below.

MAC	SSID	MODE	CHANNEL	ENCRYPTION	SIGNAL
08:10:74:17:C0:4A	default	Infrastructure	6	Off	21%
00:1D:71:21:85:50	negg-guest	Infrastructure	4	WEP	46%
00:1C:F0:F4:E6:D2	abslab	Infrastructure	10	Off	98%
00:14:BF:81:35:2E	linksys	Infrastructure	6	Off	3%
00:09:5B:97:62:42	NETGEAR	Infrastructure	11	Off	1%
00:06:5A:00:8C:4C	CityWireless	Infrastructure	4	WPA	0%

SEARCH  
VIEW  
LAN  
WIRELESS  
EXIT

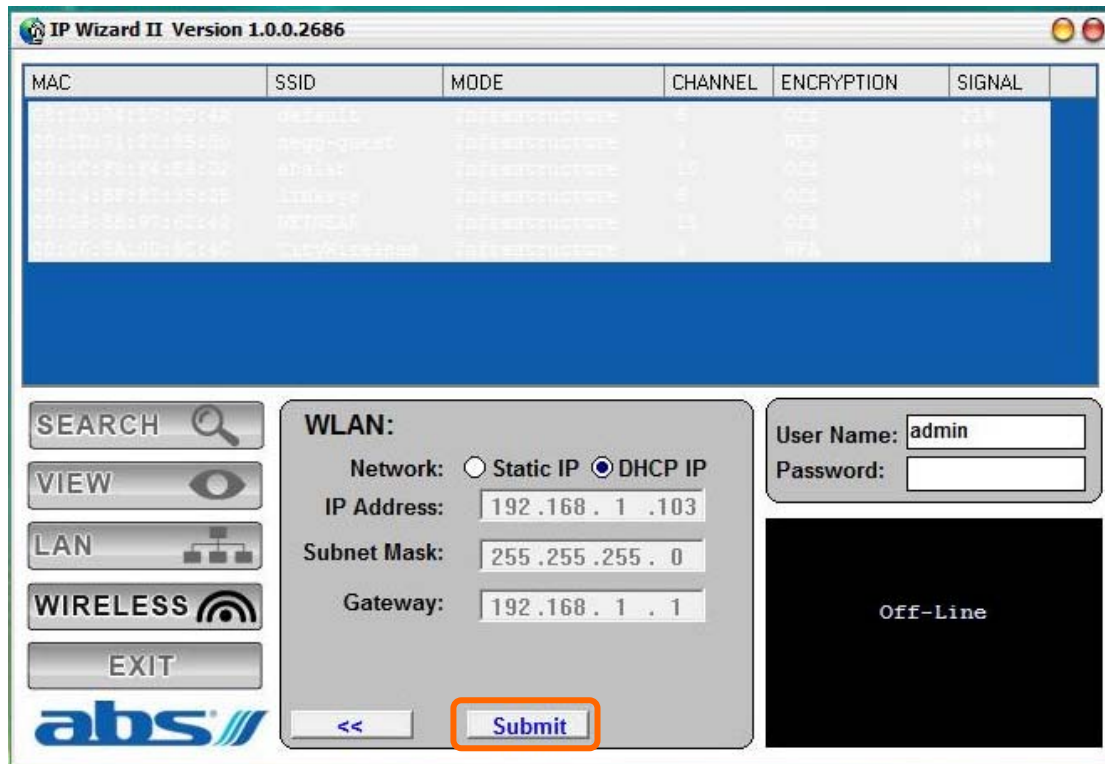
**WLAN:**  
SSID: negg-guest  
BSSID: 00:1D:71:21:85:50  
Type: Infrastructure  
Channel: AUTO  
Security Mode: WEP  
Authentication: Open System  
WEP Key: 1 \*\*\*\*\*  
(HEX: 10 or 26 Digits; ASCII: 5 or 13 Digits)

User Name: admin  
Password:   
  
Off-Line

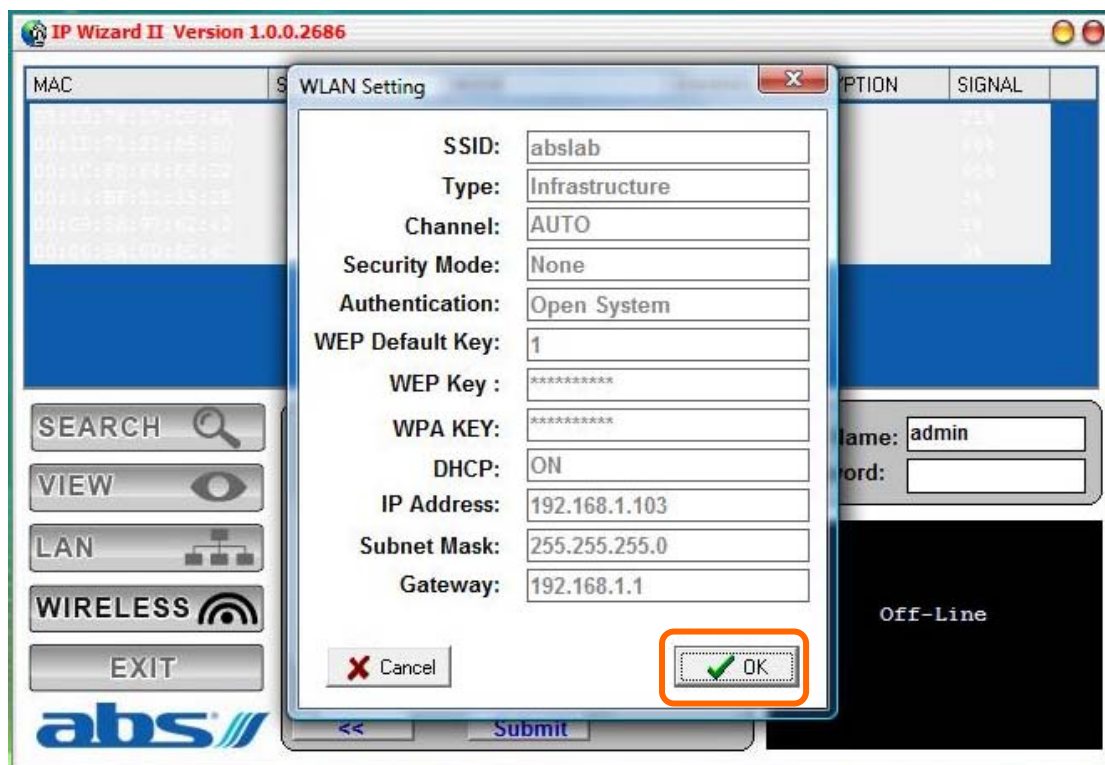
You could modify the relative settings of the selected device. Click “<<” button will quit the LAN setting procedure and click “>>” button will move to next page as below.

Once you have finished with setting up wireless, click “**Submit**” button to confirm the changes. Click “<<” button will go back to previous page.

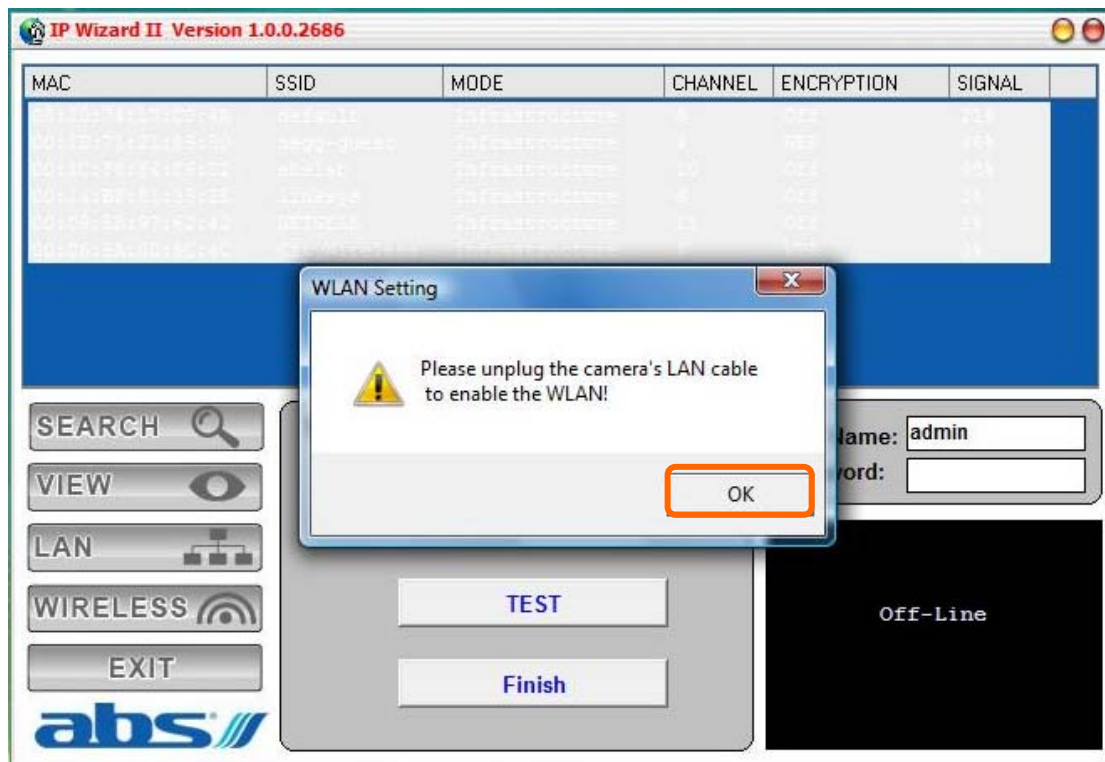




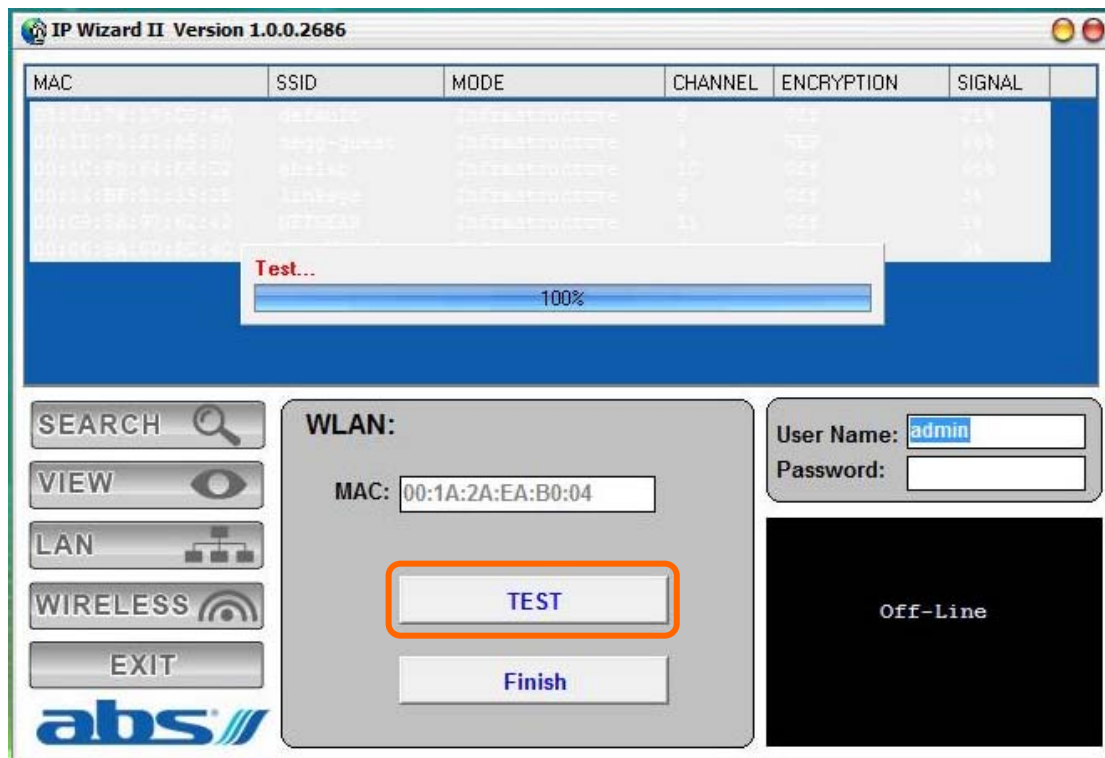
A pop up will show you your settings for wireless. If everything looks good then click “OK”. If there is a problem with the settings click “**Cancel**” to go back and correct them.



Once clicking “OK”, a pop up will appear to ask you unplug the LAN cable to enable the WLAN. Please go ahead and unplug LAN to test the WLAN.



Click on “TEST” to test the WLAN. This will connect the MegaCam to your wireless router or AP.





If everything is correct, there will be a pop up telling you that the test was successful and give you the IP address of the MegaCam.

Click on OK and you have successfully set-up the MegaCam for wireless.

Click on “Finish” to finish the wireless setting process.

